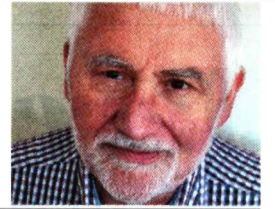


# Horsham Society

with Malcolm Willis



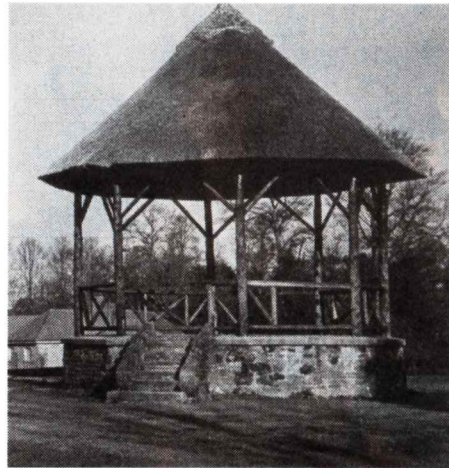
## Horsham Park - The Jewel in our Crown

**P**ark House and some of its adjacent parkland were purchased in 1927 by Horsham Urban Council from Colonel Hurst. Horsham District Council, on its formation in 1974, took over the stewardship of this beautiful piece of land.

Since its purchase there have been many changes. Horsham Park has been extended from the originally purchased 16 acres to its current size of 60 acres and has been developed to become an area for leisure and relaxation.

It now includes the Pavilions in the Park and many formal areas covering a range of sports - joggers and runners are to be seen on a daily basis and families are ever present. The children's play area, catering for all needs, is always busy and the voices of those searching for the dragon can be heard coming from the maze.

For nature lovers there are wildlife zones, the lake and a surprisingly large number of different tree types. Some of these are over 300 years old! The sensory garden and Human Nature Garden are always well visited and many workers use the park for a lunchtime break.



The Bandstand in Horsham Park in the 1950s.

This large area of land has frequently been referred to as the 'Jewel in Horsham's Crown' and has most recently been managed according to the Horsham District Council Park Management Plan 2008 which is due to expire this year.

If the park is to remain a jewel then it is essential that an updated plan is adopted and implemented. Recently there has been

much public comment about the placement of the ice-rink in the park. This would not have arisen if HDC had followed page 14 of its 2008 plan and, on removal of the old Nursery School buildings, had 'returned the site to parkland with a planned enhancement scheme'. This was also going to involve a lasting memorial to the school, landscaping and new planting, but this did not happen.

Time has now come for the plan's successor and HDC is asking for views as to what you think about the park. You have until November 27th to complete the simple online questionnaire which will help formulate the new management plan, due to run for the next seven years.

HDC is to be congratulated on carrying out a Park User Survey, and it is doing the same for Chesworth Farm, also with the intention of creating a seven-year management plan. Again, there is a simple online questionnaire asking for your views on such things as the quality of paths, the number of bird hides and information boards. It wants to know about any issues - particularly parking, paths, dogs, cyclists and litter.

We are fortunate to have such a wide

range of Parks and Countryside Sites within our town. Warnham Nature Reserve, Leechpool and Owlbeech Woods, Chesworth Farm and Horsham Park are all within walking distance for a large number of residents.

It is important that users of Horsham Park and Chesworth Farm voice their views, recognising what is good and identifying what can be done to make them even better. We are privileged to have such facilities; they are a real asset to our town and should be maintained for posterity.

By completing these surveys we can help guide HDC in creating a plan that meets the needs of the users. Follow the link below:

<https://www.horsham.gov.uk/parksandcountryside/parks-and-countryside/parks-and-countryside-sites/horsham-park>

*The Horsham Society is concerned about the past, present and future of the town. It seeks to promote good planning and design for the built environment and open spaces. Membership of the Horsham Society is open to anyone who shares these concerns. For more information, visit the website [www.horshamsociety.org](http://www.horshamsociety.org) or phone 01403 259038.*