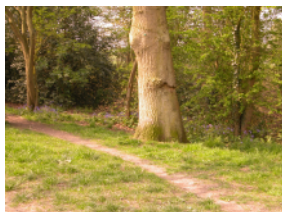


How Well Do You Know Your Local Neighbourhood?

TRAFALGAR NEIGHBOURHOOD COUNCIL

Can you identify the location of these ten photographs?



1. A riverside walk, popular with dog walkers and local children who play in the woods and open spaces.



2. A pair of cottages, with traditional stone slab roof, small pane windows and weather boarding.



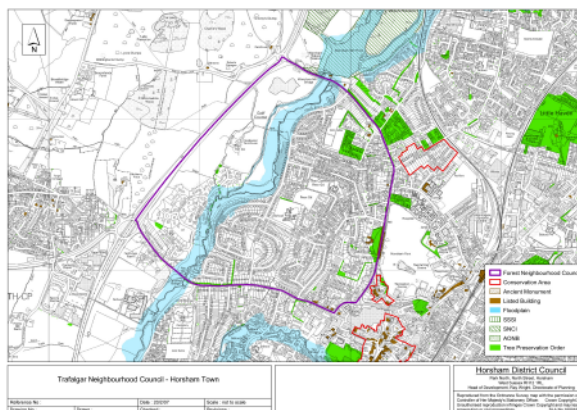
3. A C16th building, once situated on the edge of a cattle market.



4. Another old building, with small window panes and traditional decorative tile hanging.



5. This ancient open space forms an important first impression on visitors to the town.



6. The northern end of this road saw the beginnings of development in Trafalgar following the enclosure of Horsham Common.



7. A row of workers' cottages once associated with two well known local families.



8. This old bakehouse, built in 1876, has retained much of its original character.



9. This pond is recorded in the Domesday Book; now the focal point of a popular 1950s development.



10. A modern row of terraced cottages, blends in well with the late Victorian cottages nearby.