

How Well Do You Know Your Local Neighbourhood?

HOLBROOK WARD, NORTH HORSHAM PARISH

Can you identify the location of these ten photographs?



1. 1970 Shopping Parade with accommodation above serving the more southerly areas of Holbrook.



2. A new church with roof shingles to replace one lost in Horsham town centre.



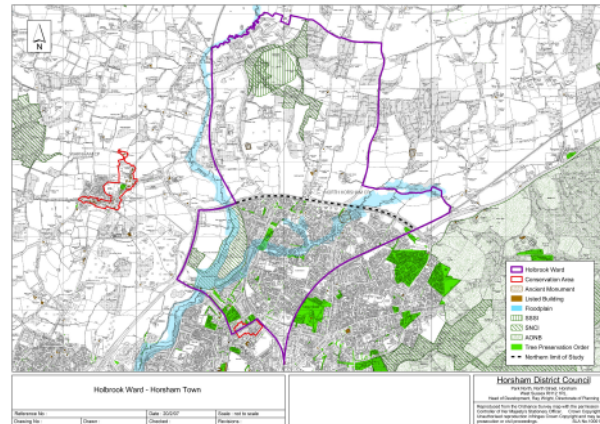
3. A reconstructed Tythe Barn providing a community resource for Holbrook.



4. A new doctors' surgery for a new community.



5. The site of Horsham's only listed Ancient Monument, probably abandoned about 1150. What was it and where is it?



6. A mixture of styles and ages, the house in the foreground dates from the coming of the London to Portsmouth Direct Railway line.



7. Another community facility close to the new church.



8. Large modern luxury homes of traditional styles and appearance.



9. An area of more "affordable" housing in the Holbrook Ward.



10. Part of Horsham's Riverside Walk with river in full flow; but where is it?