

# How Well Do You Know Your Local Neighbourhood?

## DENNE NEIGHBOURHOOD COUNCIL

Can you identify the location of these ten photographs?



1. C17th three bay timber framed building .



2. C17th weather boarded cottages which have influenced a more modern development close by.



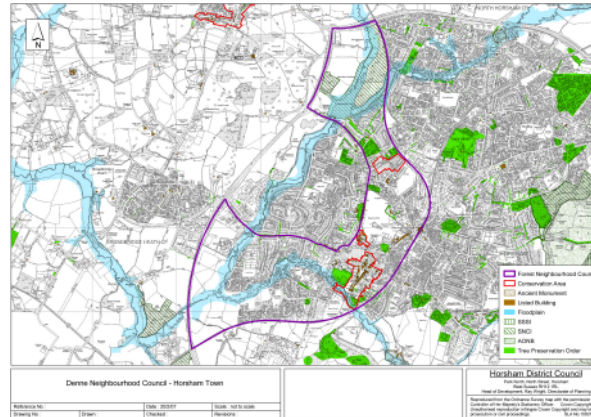
3. Row of late Victorian / Edwardian red brick terraced houses with two storey gabled roof bay windows.



4. Pair of cottages with decorative tile hanging and ornate brickwork on the tall chimneys.



5. Unique stone built house with a Horsham stone roof. The last surviving remnant of a once fine mansion



6. A careful blend of old and new. The design of these modern apartments has been influenced by the old house in whose grounds they sit.



7. Old mill with origins that date back to C12th.



8. C15th wealden building, one of the oldest properties in Horsham.



9. Terrace of houses painted different colours forming a contrasting street scene to neighbouring roads.



10. Church built shortly before 1724. The stone roof and brickwork are particularly noteworthy.